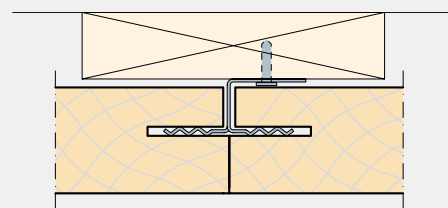
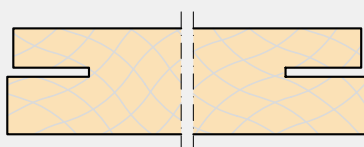


Installation instructions

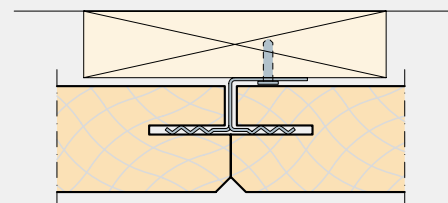
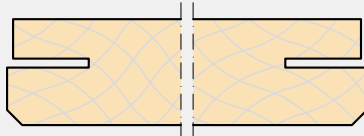
Troldekt® acoustic panels K0-N, K5-N, K11-N
Installed with concealed KN fittings on wooden battens

TROLDTEKT® ACOUSTIC PANELS

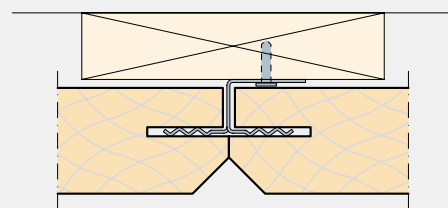
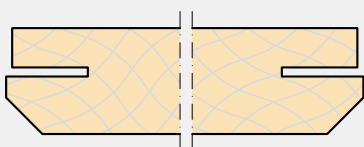
K0-N: Square edge and groove for concealed KN brackets



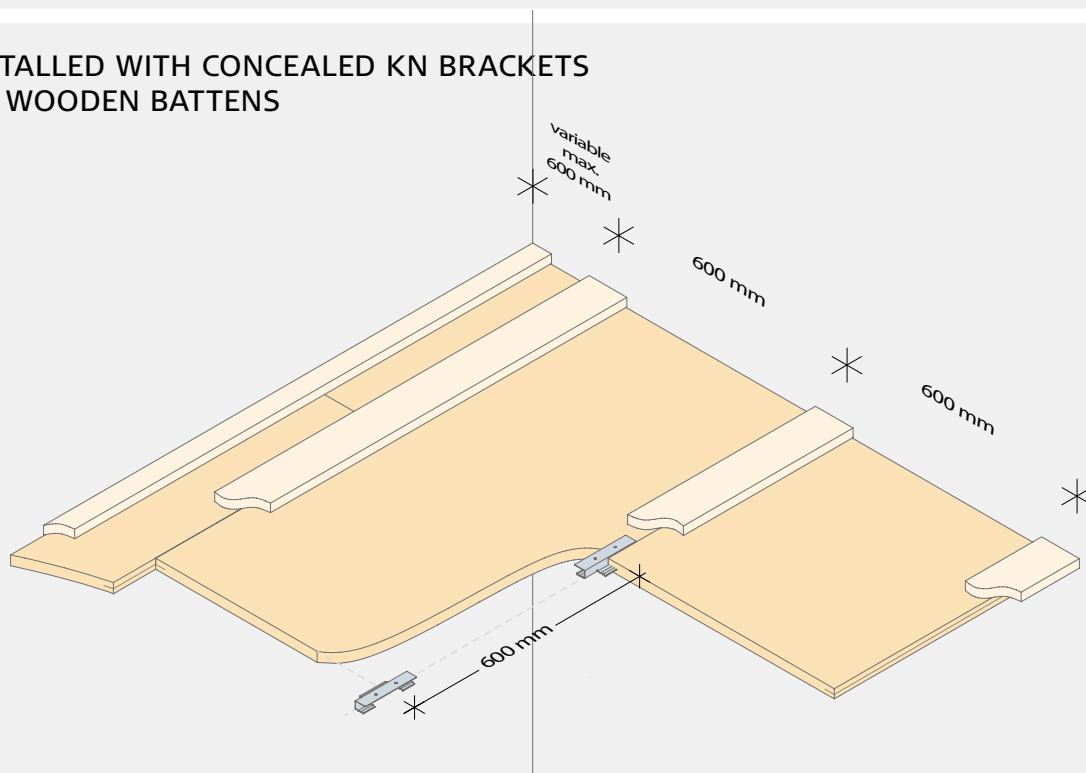
K5-N: 5 mm bevel and groove for concealed KN brackets



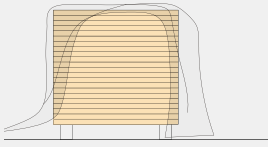
K11-N: 11 mm bevel and groove for concealed KN brackets



INSTALLED WITH CONCEALED KN BRACKETS ON WOODEN BATTENS

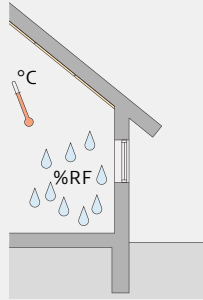


STORAGE AND ACCLIMATISATION



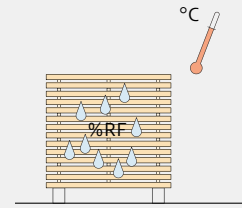
Outdoor storage

If it is necessary to store Troldtekt panels outdoors, you should protect the panels using a tarpaulin or similar. Please note that outdoor storage should be as brief as possible and never directly on the ground.



Indoor storage

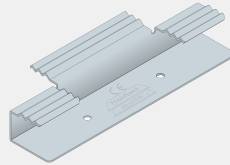
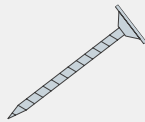
If you store Troldtekt panels indoors, you must remove any packaging, as condensation could otherwise form within the packaging. Care should be taken to protect stored Troldtekt panels from moisture, direct heat and dust.



Acclimatisation

It is important that the Troldtekt panels are allowed to acclimatise prior to installation. Acclimatisation means that the panels must adapt to the temperature and humidity in the room where they are to be installed.

COMPONENTS



Product name	Troldtekt wood screw, 3.9×55 mm	Troldtekt KN bracket
Quantity per pack	100 pcs.	100 pcs.
Quantity per panel	Use screws along the first and last rows along the wall. Fasten with screws at 600 mm centres.	Panel length: 600: 1 pcs. per panel 1200: 2 pcs. per panel 2400: 4 pcs. per panel Plus 1 extra per row

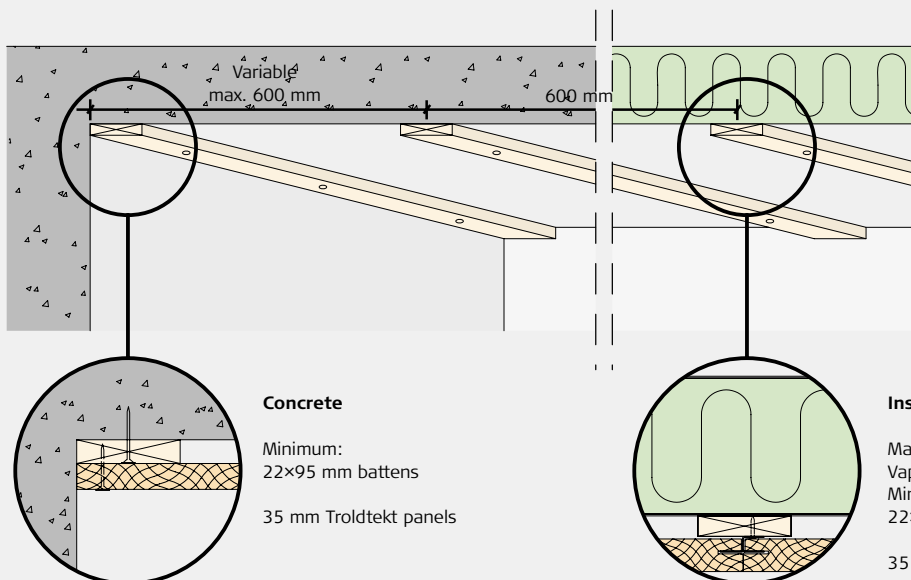
STRUCTURAL SOFFIT

When installing Troldtekt panels on wooden battens, the battens must have minimum dimensions of 22×95 mm. The battens must be installed with a centre spacing of 600 mm.

Vapour check

If you need to install a vapour check, we recommend using polyethylene. If you use aluminium foil instead, the bright side must face away from the Troldtekt panels.

Install vapour check tightly against the insulation.



Concrete

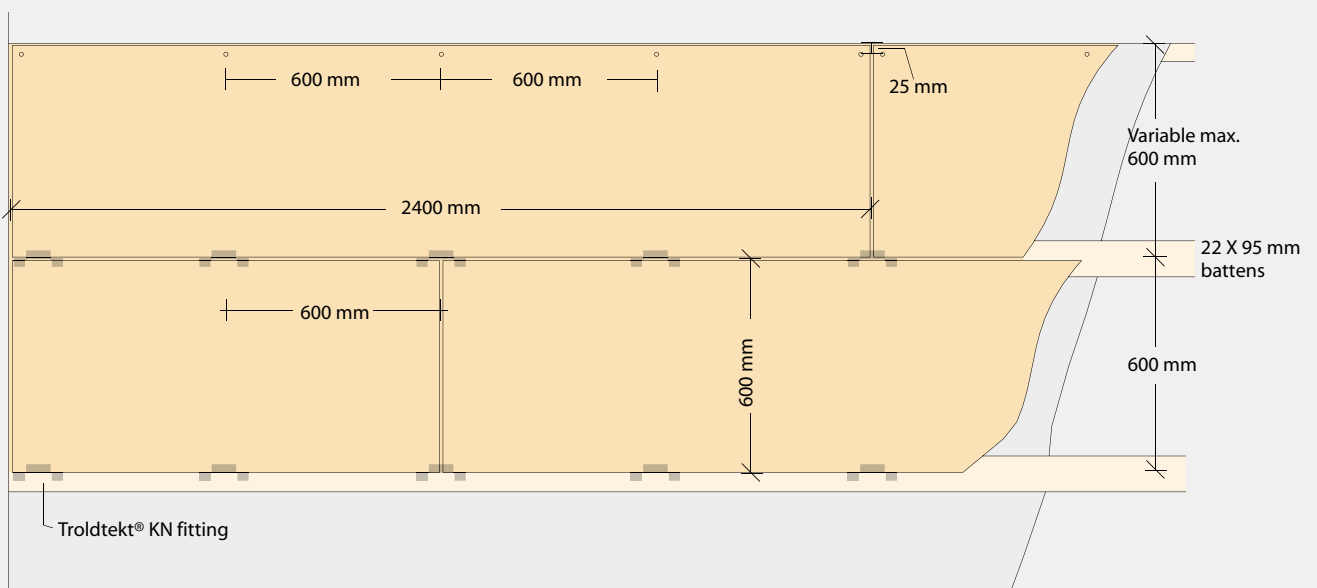
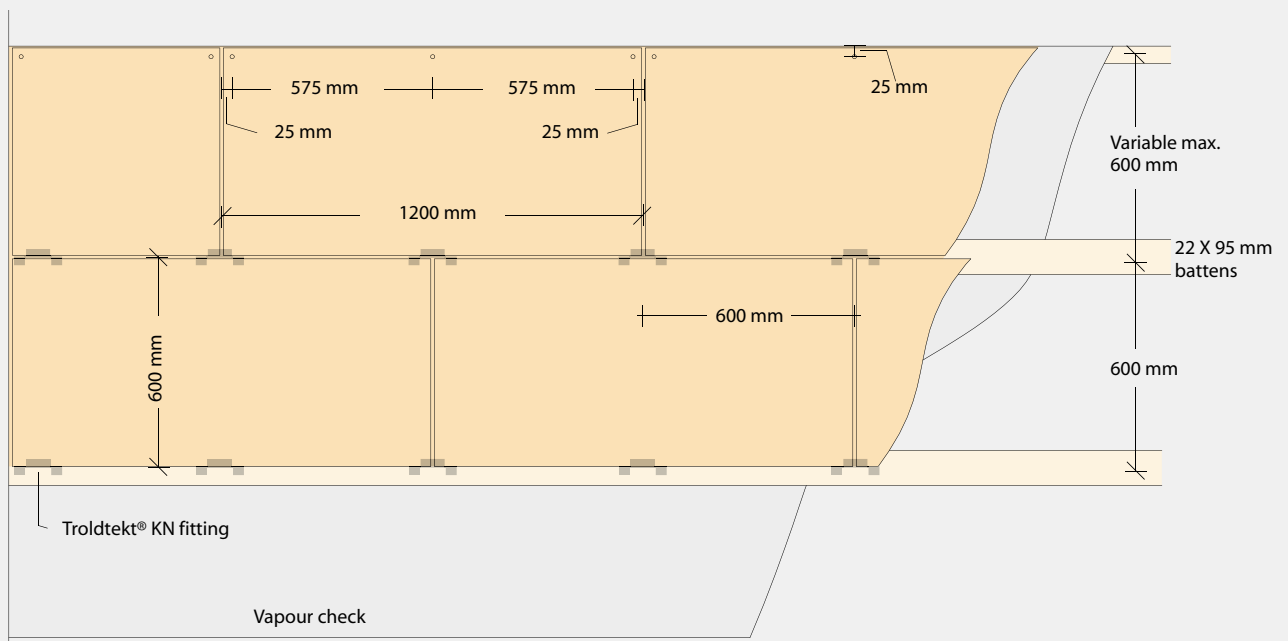
Minimum:
22×95 mm battens
35 mm Troldtekt panels

Insulation

Main beam (truss)/purlin
Vapour check
Minimum:
22×95 mm battens
35 mm Troldtekt panels

INSTALLATION

- 1: Start by installing a continuous row of Troldekt panels along the centre line of the room. Then continue on both sides. It is important that the panels are installed closely together, and the optimum aesthetic effect is obtained by installing the panels in broken bond. Screw the first line of brackets into the battens in the centre line of the room using two screws (3.5×25 mm) per bracket.
- 2: Install the first bracket against the wall and the next bracket in the panel joint. See the figure below. Then lead the groove of the panel over the bracket and install the next line of brackets continuously as you install the panels. It is important that the panels are installed tightly together.
- 3: Fix the Troldekt panels along the wall, lengthwise, using Troldekt screws (3.9×55 mm) spaced 25 mm from the edges. The maximum distance between the screws should be 600 mm. See the figure below. Be careful not to overdrive the washered screws and so cause an indentation in the panel.



INSPECTION ON RECEIPT

On receipt, check that the number of panels is correct and that the panels do not have visible flaws and defects. Please inform the supplier immediately in case of defective

panels, as we cannot accept claims regarding visible flaws and defects after the panels have been installed.

AFTER INSTALLATION

Remove any processing dust with a vacuum-cleaner with a brush nozzle.

If the installation process has left lines or other dirt on natural wood panels, you can

remove these by using a slightly damp cloth. Touch-up paint is available as required.

SUBSEQUENT CARE AND MAINTENANCE

Troldtekt panels usually require no subsequent care. However, we recommend regular cleaning along with other surfaces – and otherwise as required.

Use a vacuum cleaner with a brush nozzle. If vacuum-cleaning is not sufficient, you can

wipe the panels using a slightly damp cloth. If you subsequently want to paint the Troldtekt ceiling, you can use a long-haired paint roller or a hand sprayer. Water-based paint will not reduce the sound-absorbing performance of the panels.

PRODUCT STANDARDS, LABELLING AND CERTIFICATES

The table below indicates the size tolerances declared by us in accordance with the standard for cement-bonded wood wool (EN 13168) and the standard for suspended ceilings (EN 13964). It is important to note that Troldtekt is a natural material and the very nature of the material composition – wood wool and cement – may result in small variations in the thickness of the panels. Panel dimensions and weights

remain inside the tolerance indicated at 23 +/- 2° C and 50 +/- 5% relative humidity. However, inappropriate storage and lack of acclimatisation can alter the dimensions and weight of the panels. It is therefore important that you observe the installation, storage and acclimatisation instructions carefully.

Due to the composition of the materials, colour shade variations may occur.



Godkendelse
MK 6.31/0379



THICKNESS (mm)	WIDTH (mm)	LENGTH (mm)	WEIGHT (kg/m ²)	NO. OF PANELS (per pallet)	PERPENDICULARITY (mm)	PLANENESS (mm)
35	600	600 1200 2400	12.0	56* 56 28	≤2	≤3
(+/- 1.5)	(+/- 1)	(+/- 1.5)	(+/- 10%)			

*600×1200mm pallet

FURTHER INFORMATION

On www.troldtekt.com you can read more about Troldtekt products. You can also download the most recent version of these

installation instructions and see the complete range of Troldtekt installation instructions.



Troldtekt A/S
Sletvej 2 A
DK-8310 Tranbjerg J
Tel. +45 8747 8100
Fax +45 8747 8111
info@troldtekt.dk

www.troldtekt.com